

Don't Be a Muckmaker!

Raking leaves and grass clippings into the lake speeds up the aging process. They contribute to the fill-in process, create muck for you and your neighbor and rob our lake of vital oxygen. **Burning leaves** near the lake is even worse. It releases phosphorous immediately into the water – which can cause an increase in algae.



Trespass Lightly

Be kind to your neighbors and the wildlife. Unshielded light travels farther than people realize. It interferes with your neighbor's natural view of the lake and stars at night. Outside lighting can disrupt the mating, food finding, sleeping, and migration of fish and wildlife. **Consider using timers, shielding that directs light only where needed, or motion detectors that indicate activity.**



*Make **PLANS** to keep
our lake healthy!!!!*

***Phosphorus Free**
Leaves and Lights Out
Animal Waste Out
Native Plants In
Septic Systems Maintained*

*Everyone can do something to help
keep our lake around by making
PLANS now.*

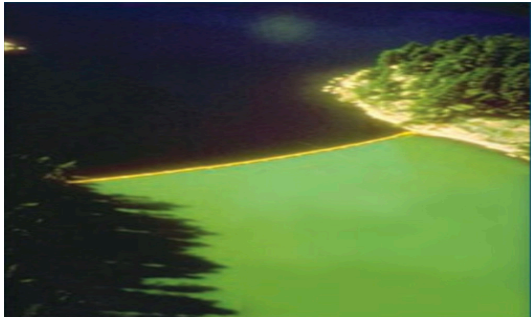
Lake Papakeechee est. 1914

*Lake Papakeechee Sustainability Initiative
2023*

Keeping Our Lake Healthy



...Is Dirty Business



Excessive Phosphorus - The Primary Cause of Degraded Water Quality.

Half of the lake above was treated with carbon and nitrogen. The other side (the green side) was treated with carbon, nitrogen **and phosphorus**. The experiment showed that too much phosphorus promotes algae growth (including algal blooms, some of which can be toxic).

Your Dog is Not a Goose!

We can't follow the geese around with a baggie, but we can keep track of our pets to reduce phosphorus runoff and *E. coli* bacteria. Clean up after them.



The Old Gray Mare, She Ain't What She Used To Be.

Old, possibly leaking septic systems can increase phosphorus and *E. coli* levels in the lake. Many homes on Lake Papakeechee were built a long time ago – as summer cottages meant for 1 or 2 people on the weekends – not as year round homes for multiple people. **Is your septic more than a hole in the ground?**



Do you know if it is working properly? **As a homeowner you are responsible for maintaining your septic system.**

Protect nearby surface and ground waters from being contaminated by properly maintaining your septic system – including an inspection and having the tank pumped every 2 years.

Want More Algae and Weeds?

Most fertilizers contain phosphorus. It promotes plant growth in lakes, just as it does in home gardens. However, in lakes it promotes algae growth. **Use phosphorus-free fertilizers.**



Heard there was a Party!

Are you serving snacks and hosting goose parties? Feeding the geese can unnaturally increase their numbers. Large groups contribute phosphorus and *E. coli* to the lake through feces, which can cause algae blooms. Let the wildlife be wild.

Buffer! Buffer! So You Won't Suffer!

One of the best ways to protect the lake – and keep the geese out of your yard – is by preserving a **natural buffer of native plants, trees, shrubs and groundcover along the shoreline**. Shoreline plants filter sediment and chemicals from runoff, provide food and shelter for fish and wildlife and slow or prevent shoreline erosion.

