

Papakeeche Lake

BOD Report

By Joyce Arleen Corson

September 27-October 10, 2020

Today after working at the boat landing on Wawasee, grooming the shore in honor of National Public Lands Day Patty, Linda and I walked over to our own wetland and as always found new plants growing. I am so thankful the BOD has accepted the fact our wetland

Photo by Patty



is Natural and Native. We found new Chicory by the channel and blooming marsh milkweed from seeds planted in that location in 2015. Chicory is a wild-flower that was not originally native to North America-- it was brought from Europe, 1700's. Roots have flavor of coffee when brewed. With the sky blue color some tribes used it in ceremonies. It is mostly seen along roadways.



Canadian



Nodding Beggartick Photo by Linda



Thistle by Katherine

Enjoy our Natural, Native Wetland3



Colony of switch grass at edge of old pond C. Hopefully it will crowd out loose strife.

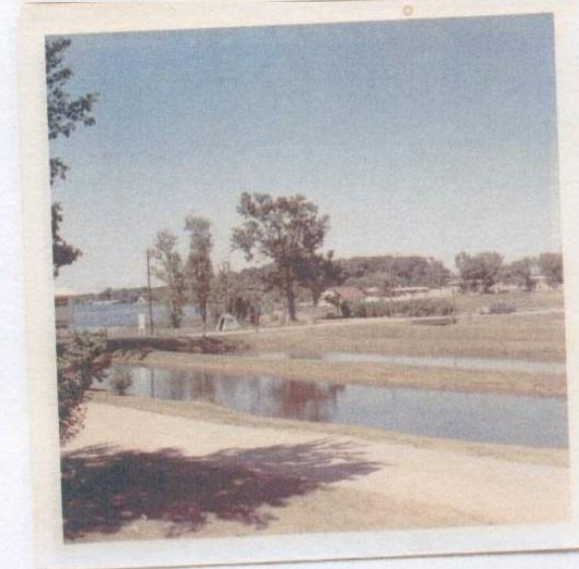
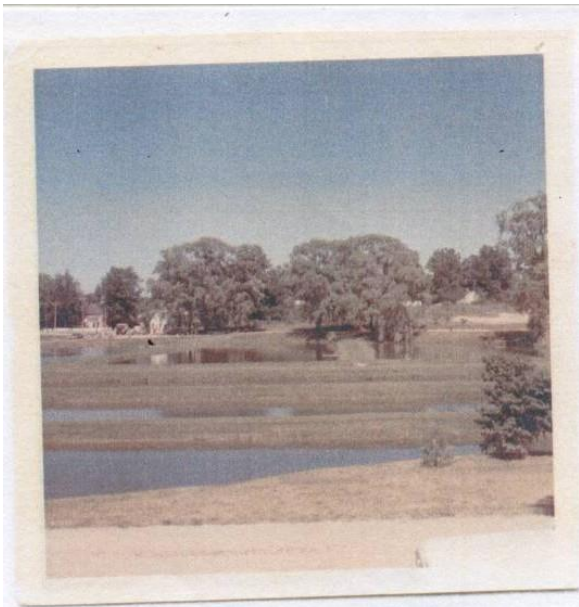


Cattails before our deadheading.



After Deadheading

Unfortunately the ragweed *Ambrosia*, growing in same season produces a natural substance called histamine for which goldenrod was falsely blamed for giving the objectionable effect on the human respiratory system.

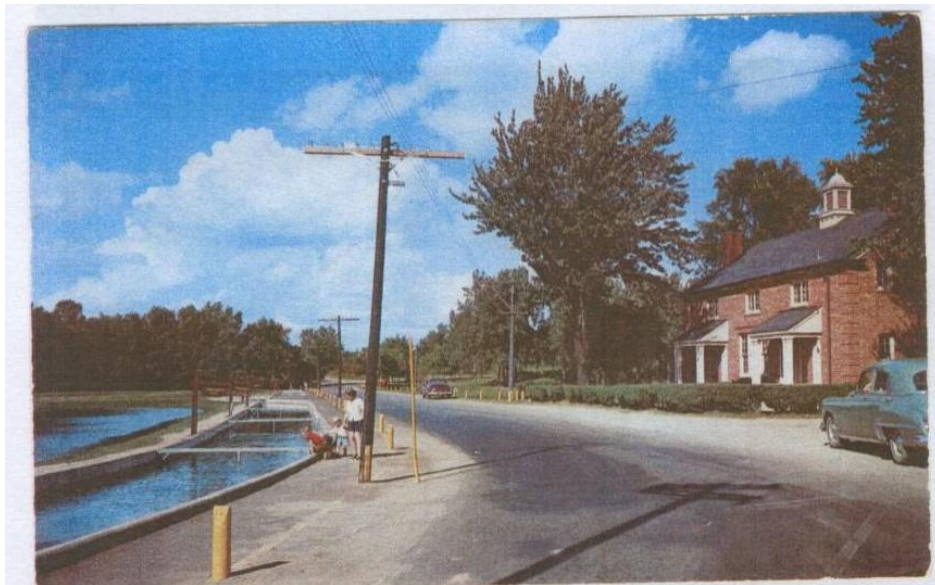


I thank Patsie Smith, her sister and family for sharing their pictures with me.

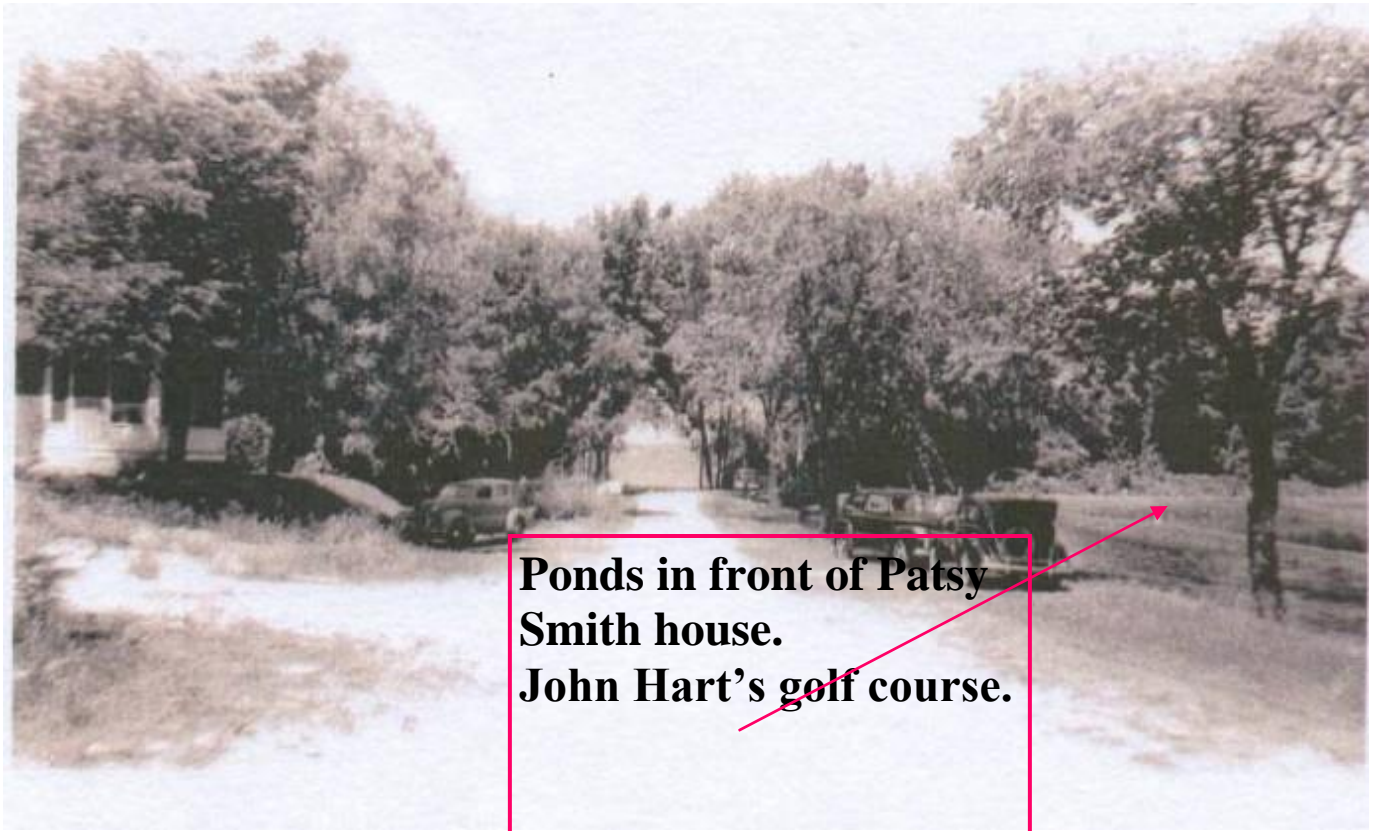
Maintenance is essential revealing pride in the ownership of a valued community project.



Patsy Smith House, used to be south of Mr. and Mrs. Hart. Moved 4 or 5 year ago. New house is at top of hill.



Fish Hatchery display tanks well kept and beautiful.



**Ponds in front of Patsy
Smith house.
John Hart's golf course.**



Old dam and channel 1914. Facing South.