

Wetland August 7, 2020

By Joyce Arleen Corson

Linda, Patty, Katherine and Greg , Diane and Jodi

We continue to search and seize cattails and now loosestrife the later which has exploded growing on the entirety of the wetland. There is good coverage of vervain, iron weed, Joe Pie weed and the sedges and there is no question it is hard to separate the pink flowers. I do give the loosestrife some credit for shoring up the earth so the desirables can establish some ownership. The white flowers are blooming now Queen Anne's Lace, yarrow, boneset and hibiscus.

The good news is that most of the mitigation area for which we are responsible is clear of loosestrife and cattails it is the fringes that remain at large. I haven't lost interest in a board walk at the west end of old pond in the middle. It is a quagmire and dredging out those cattails once and for all is the only way to rid the giant roots.

The thought is never far from my mind that the scientists may appear, or may have already done so, for a spot check on our integrity. Assuming the permits filed in 2008 have become history we continue to care for the wetland.

The newly seeded area where crown vetch once stood is growing nicely with zinnias, poppies and gaillardia.

Our membership has a vested interest in the responsibility of the wetland. I am amazed at the people who work there have zeroed in on a species they can readily identify, other than cattail or loosestrife. many birds have surprised us with species new to all of us.

In some ways this year 2020 will be blocked out as it has given us plenty of trouble but has given us the power to endure. Many of us have chosen to work with social distancing and wearing masks. The effect of pollen on the nose and throat give unexpected sneezing and coughing which we know can carry pathogens.

Diane Tulloh and Jodi Hedges joined Linda, Patty and I today and doubled the size of the loosestrife pile. The sisters have been faithful help since the seeds were planted in 2015.

Thursday Katherine and Greg joined me in setting the pace to get rid of loosestrife. It seems it didn't show it's face until this week. When Colton, our adopted grand was here last week there was just a few blooming. It's essential we identify it without flowers.



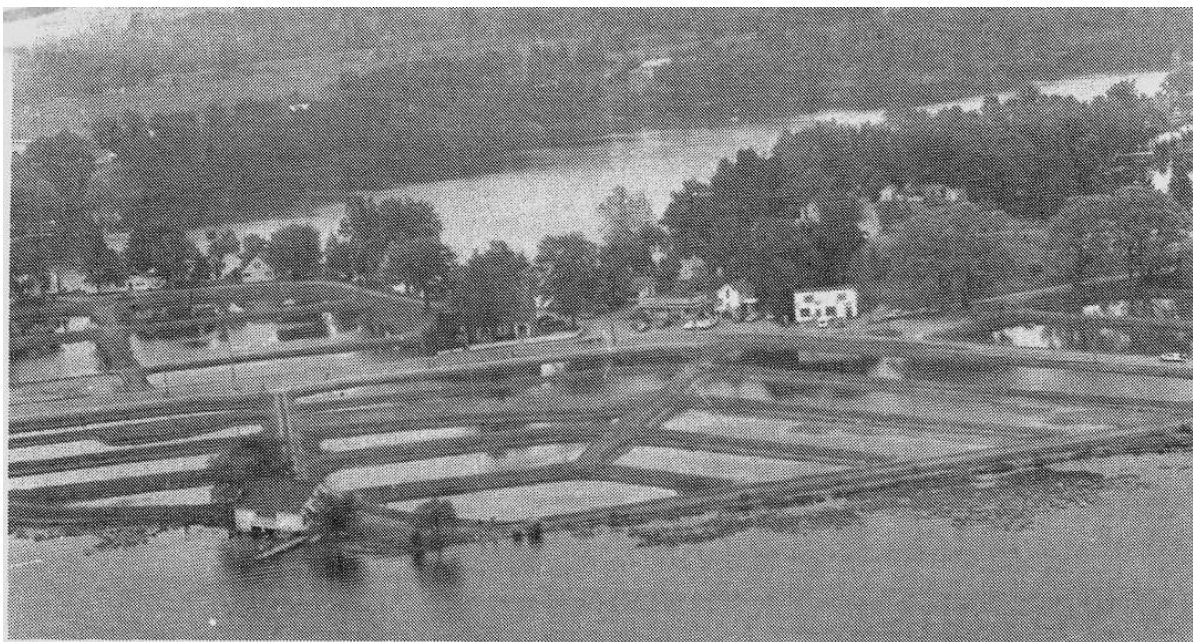
Ironweed here with Colton is a beautiful Purple color which only lasts about 5 days and then it turns to rust! This is on the birm of Tri 2. It is a perennial and will return to that spot next year.



The cinch worked excellent for Katherine in deep water. The pile of loostrife is on the birm of tri 3. The size of the burn pile doubled in size today. We kept the loosestrife to give the guarencella beetle a chance to escape. It is being over-powered but is still an essential tool for loosestrife control



Markers by Katherine are still on the agenda.



REMEMBER WHEN IT WAS LIKE THIS? — Remember when this was what the Wawasee Fish Hatchery site looked like? These aerial photos were taken in the summer of 1968. The top photo shows the fish hatchery as it appeared looking into shore from the lake. Now the ponds are gone, filled in to make a park; only two of the three buildings shown along old road 8 remain. The one on the left, the fish hatchery building, and Brazel's Bait Shop on the far right, now known as Top Notch Bait. The building in the middle was Galloway's Grocery, torn down and rebuilt as Bay Watch Restaurant. The building in the foreground is believed to have been a maintenance building with three boat houses and a pier.

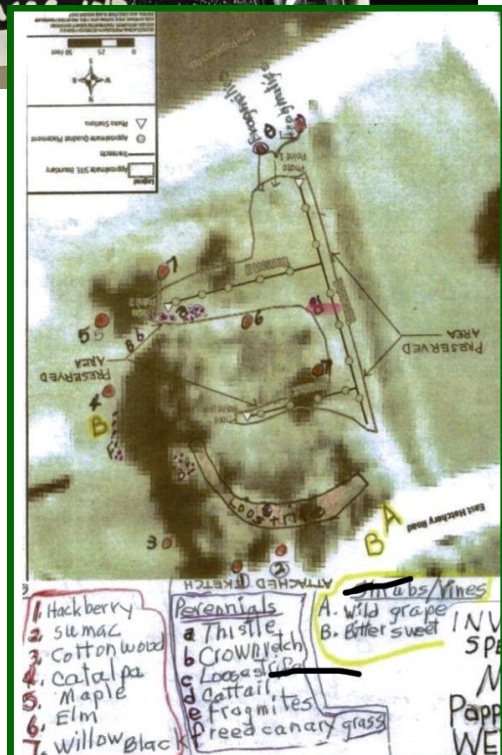
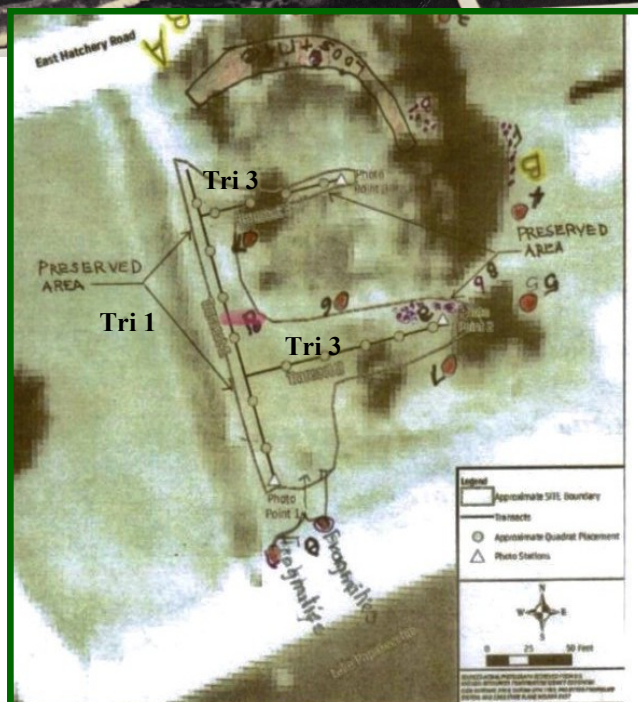
The bottom photo shows the fish hatchery from the east looking west. All of the small ponds shown in the photo have been filled and the area is being used as the Wawasee Family Fishing Area.

Recently this was sent to me on FaceBook. I found it very interesting especially when we moved here in 1969 it was relatively in the same condition.



This is a very rough sketch of where our wetland is located. Linda's collection has the shape file in her top middle picture. I have enlarged here and located loosestrife in pink.

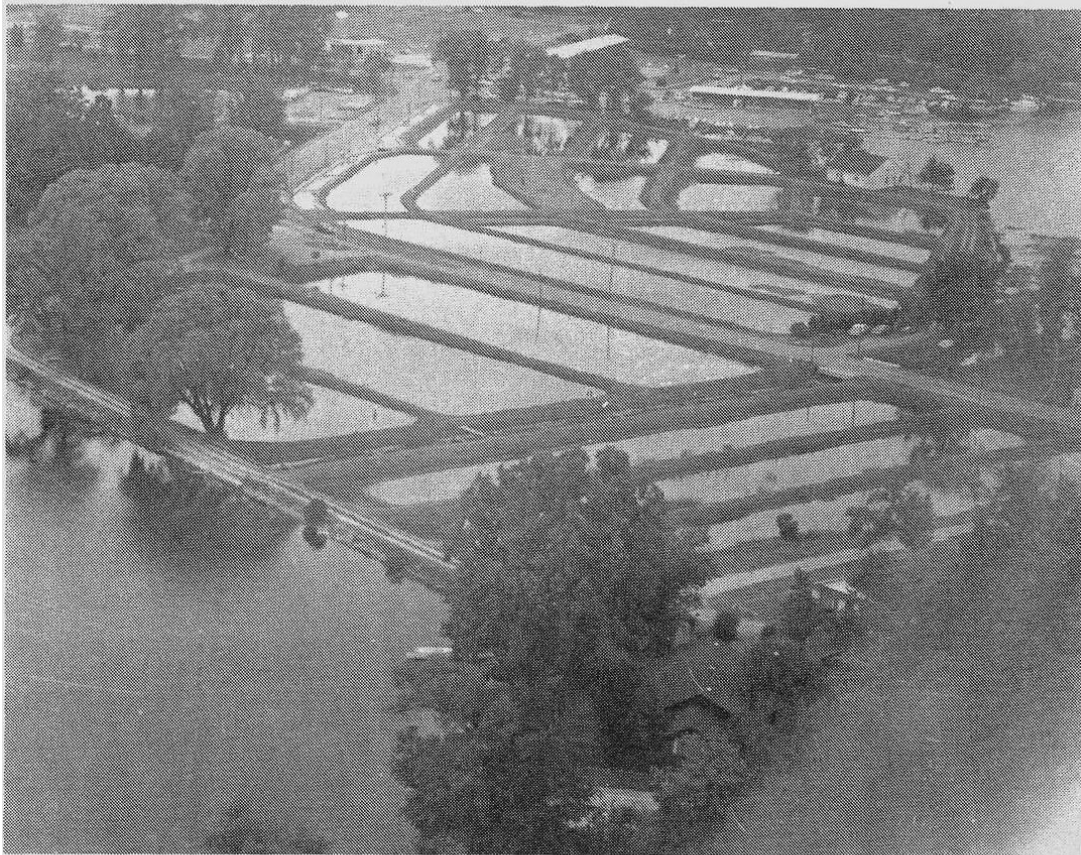
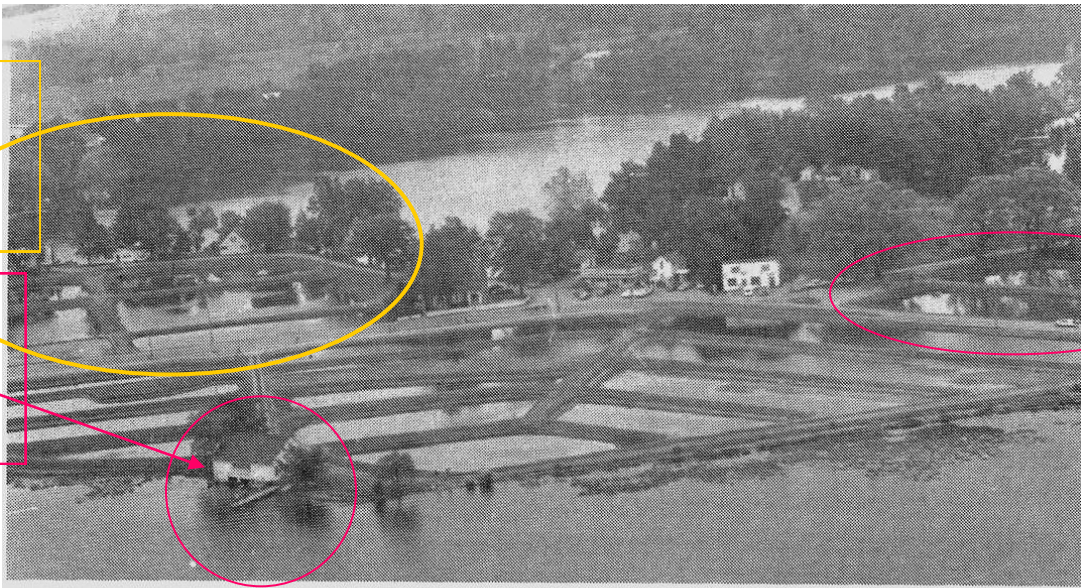
The 3 trisects are labeled according to Williams Creek Consultants.



Boat Launch parking

Pump-
ing sta-
tion to obtain
water from
Wawasee.

Location of our wetland mitigation area. The third pond to the west is not visible.



REMEMBER WHEN IT WAS LIKE THIS? — Remember when this was what the Wawasee Fish Hatchery site looked like? These aerial photos were taken in the summer of 1968. The top photo shows the fish hatchery as it appeared looking into shore from the lake. Now the ponds are gone, filled in to make a park; only two of the three buildings shown along old road 8 remain. The one of the left, the fish hatchery building, and Brazel's Bait Shop on the far right, now known as Top Notch Bait. The building in the middle was Galloway's Grocery, torn down and rebuilt as Bay Watch Restaurant. The building in the foreground is believed to have been a maintenance building with three boat houses and a pier.

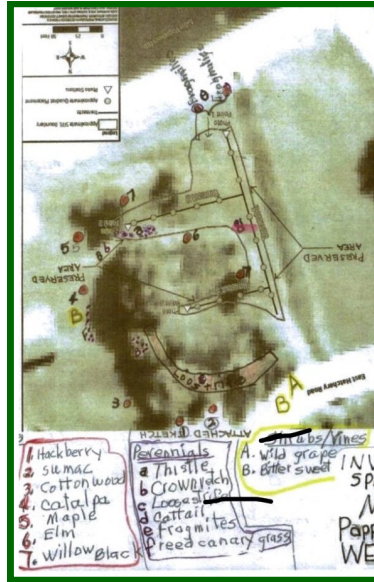
The bottom photo shows the fish hatchery from the east looking west. All of the small ponds shown in the photo have been filled and the area is being used as the Wawasee Family Fishing Area.

By not living here at that time you missed and incredible over haul! Some markings of interest.

Remembering



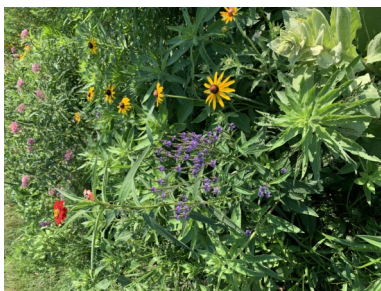
Remember what you see.
Linda remembered the map in which I labeled all the unwanted plants.



If you plant Butterfly Weed sure enough they'll show up to eat it! 😊😊😊



Linda's Collection



Patty's Collection

